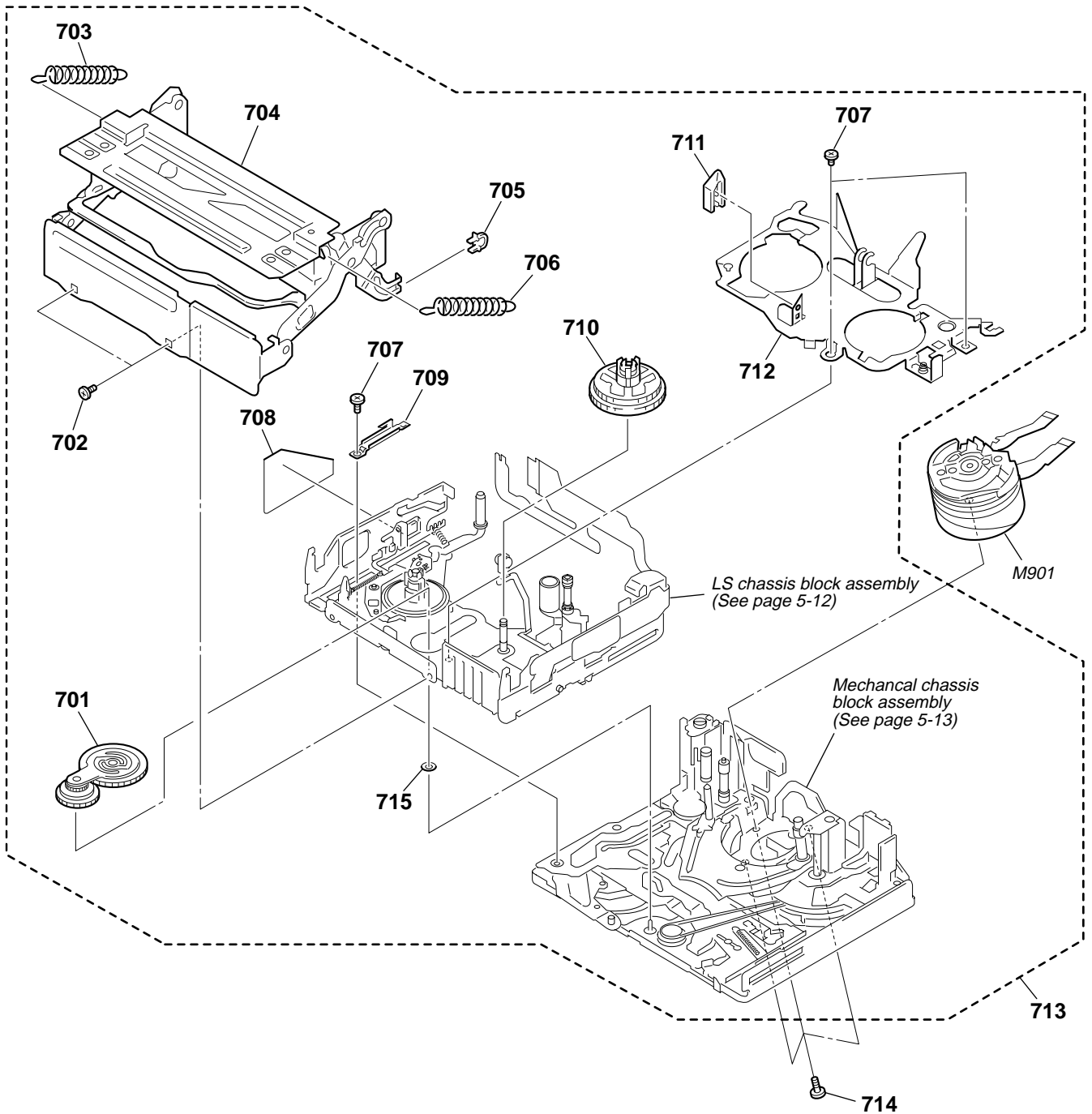




5. REPAIR PARTS LIST

5-1-9. OVERALL (MECHANISM DECK-Z100)



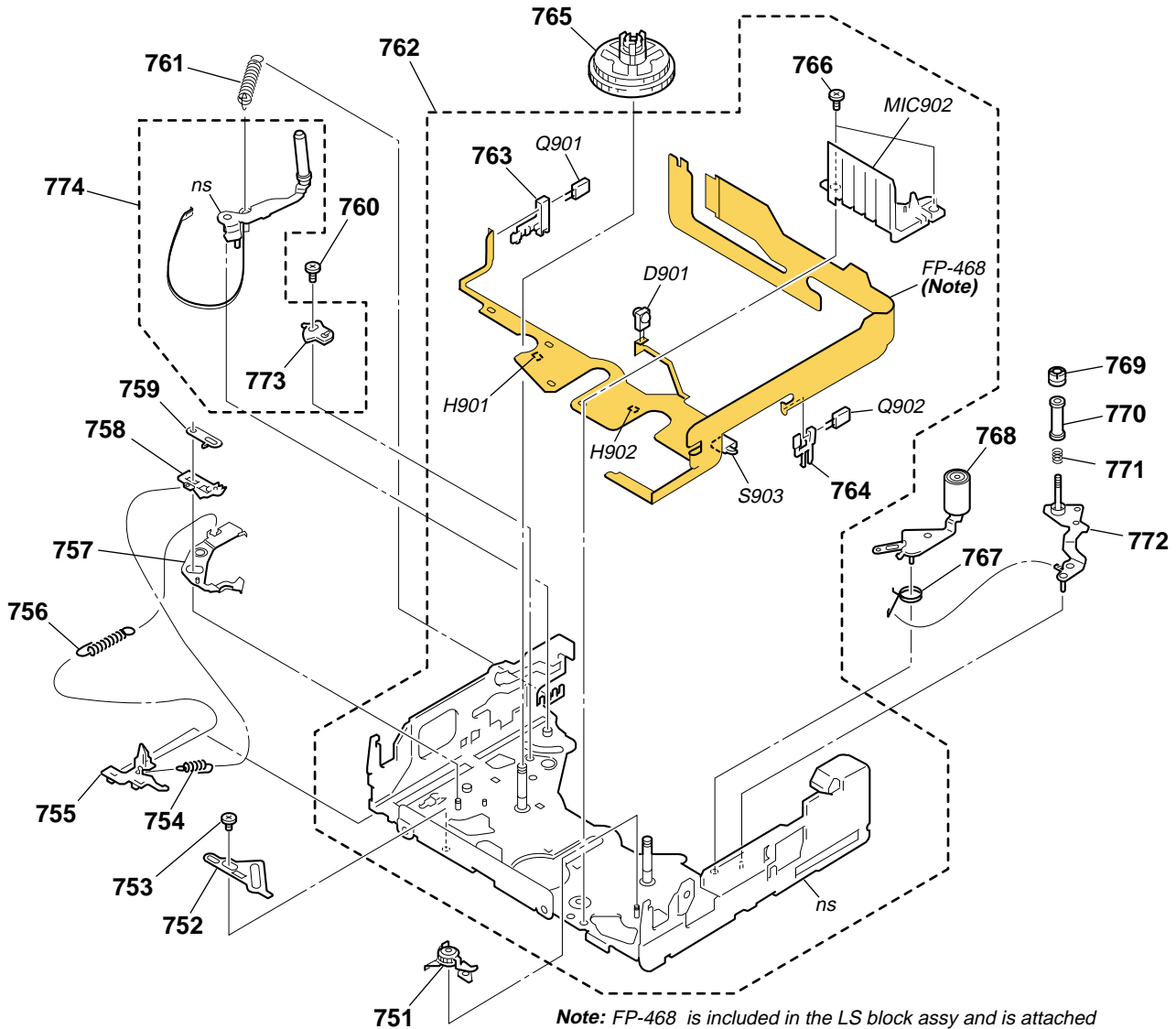
Ref. No.	Part No.	Description	Remarks	Ref. No.	Part No.	Description	Remarks
701	X-3952-938-3	GEAR ASSY, GOOSENECK		709	3-079-364-01	RETAINER, LS GUIDE	
702	3-075-097-11	SCREW (M1.4X1.4), SPECIAL HEAD		710	X-3952-937-1	TABLE ASSY, T REEL	
703	3-079-206-02	SPRING (POP UP S), TXTENSION		711	3-079-366-01	RELEASE, REEL LOCK	
704	X-3952-939-3	COMPARTMENT ASSY, CASSETTE		712	X-3953-257-1	PLATE ASSY,RETAINER	
705	3-079-367-01	DAMPER, CASSETTE COMPARTMENT		713	A-7095-393-A	MD (Z100) SUB ASSY	
706	3-079-215-02	SPRING (POP UP T), EXTENSION		714	3-079-741-02	SCREW,DRUM FIXING	
707	3-703-816-15	SCREW (M1.4), SPECIAL HEAD		715	3-748-682-01	WASHER, T	
708	3-080-545-01	COVER, SENSOR S		M901	A-7048-981-A	DRUM (DEH-30A-R) (SERVICE)	



5. REPAIR PARTS LIST

5-1-10. LS CHASSIS BLOCK ASSEMBLY

ns : not supplied



Note: FP-468 is included in the LS block assy and is attached to chassis by hot-press. because installation of FP-468 requires a very high accuracy, FP-468 is not supplied as an independent service parts.

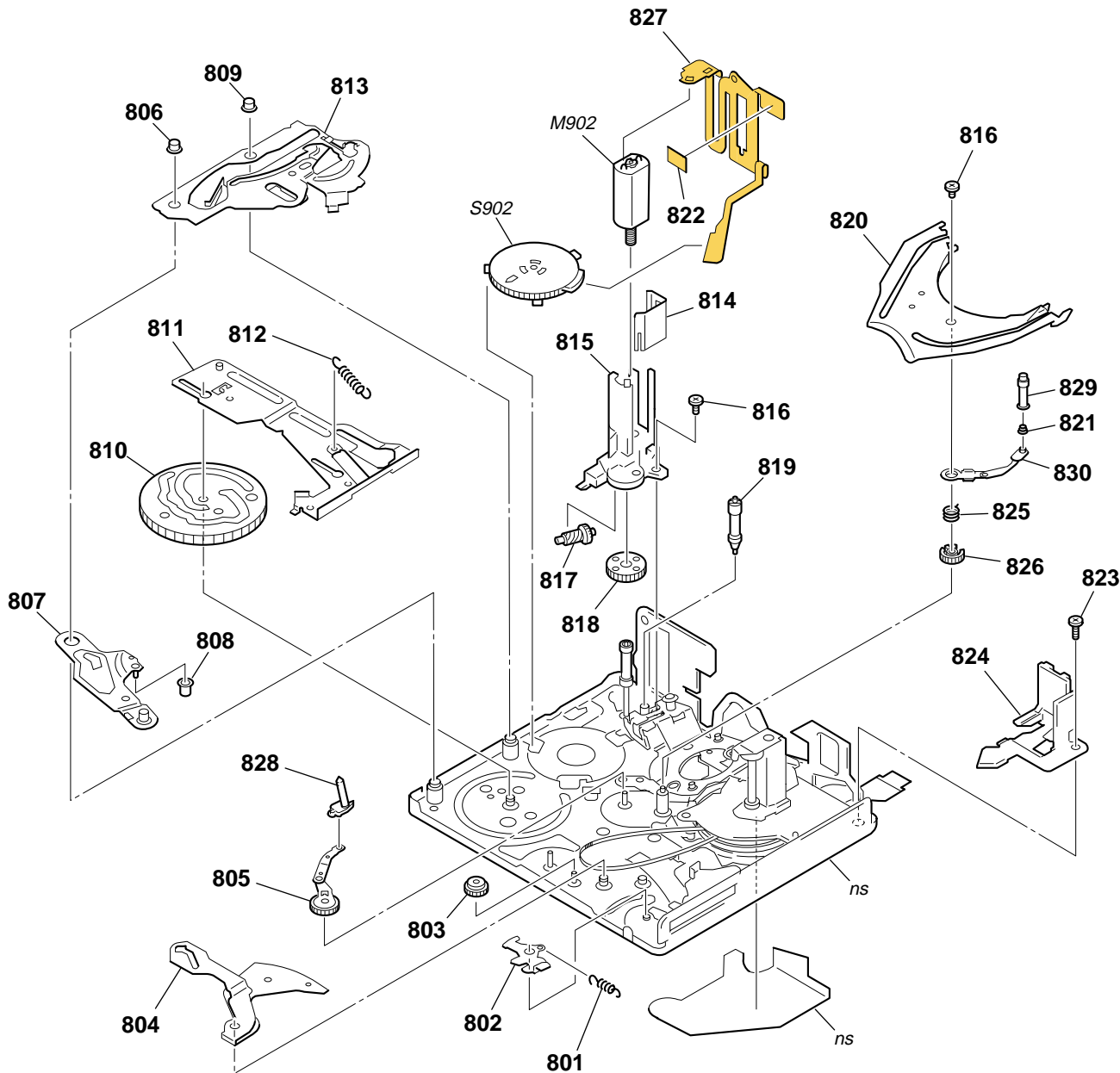
Ref. No.	Part No.	Description	Remarks	Ref. No.	Part No.	Description	Remarks
751	A-7095-402-B	BRAKE (T) BLOCK ASSY		767	3-079-243-01	SPRING (PINCH RETURN), TORSION	
752	3-079-241-01	PLATE, LS CAM		768	X-3952-934-1	ARM ASSY, PINCH	
753	3-075-097-11	SCREW (M1.4X1.4), SPECIAL HEAD		769	3-052-062-02	NUT, TG7	
754	3-079-246-01	SPRING(RELEASE RACK),EXTENSION		770	3-079-219-02	TG7	
755	3-079-248-01	POSITIONING(S), CASSETTE		771	3-081-591-01	SPRING, COMPRESSION (TG7)	
756	3-079-244-01	SPRING (ULE), EXTENSION		772	X-3952-935-3	ARM ASSY, TG7	
757	X-3952-932-1	BRAKE ASSY, ULE		773	3-079-237-01	ADJUSTOR, BAND	
758	3-079-245-01	RACK (S), RELEASE		774	A-7095-403-B	TG2 ARM BLOCK ASSY	
759	3-079-247-01	BRAKE (S)		D901	6-500-652-01	DIODE GL453SE0000F (TAPE LED)	
760	3-059-090-11	SCREW (M1.4X2.5), SPECIAL HEAD		H901	8-719-067-74	ELEMENT, HOLE HW-105A-CDE-T (S REEL)	
761	3-079-242-01	SPRING, TENSION		H902	8-719-067-74	ELEMENT, HOLE HW-105A-CDE-T (T REEL)	
762	A-7095-401-A	LS BLOCK ASSY		MIC902	1-817-175-12	PIN, CONNECTOR (WITH DETECTION SWITCH)	
763	3-079-267-01	HOLDER (S), SENSOR		S903	1-529-566-51	SWITCH, PUSH (1 KEY) (C.C. DOWN)	
764	3-079-268-01	HOLDER (T), SENSOR		Q901	6-550-402-01	TRANSISTOR PT4850FE000F (TAPE END)	
765	X-3952-936-2	TABLE ASSY, S REEL		Q902	6-550-402-01	TRANSISTOR PT4850FE000F (TAPE TOP)	
766	3-703-816-15	SCREW (M1.4), SPECIAL HEAD					



5. REPAIR PARTS LIST

5-1-11. MECHANICAL CHASSIS BLOCK ASSEMBLY

ns : not supplied



Ref. No.	Part No.	Description	Remarks	Ref. No.	Part No.	Description	Remarks
801	3-079-314-01	SPRING (EJ), EXTENSION		817	3-079-308-01	SHAFT, WORM	
802	3-079-327-01	ARM, EJ		818	3-079-309-01	GEAR, DECELERATION	
803	3-079-323-02	GEAR, CONVERSION		819	X-3952-942-2	ROLLER ASSY, TG3	
804	3-079-324-01	ARM, GL DRIVING		820	3-079-325-01	RAIL, GUIDE	
805	X-3952-928-1	GL (S) ASSY		821	3-079-295-02	SPRING, TG5	
806	3-079-315-01	ROLLER (S1), LS GUIDE		822	1-677-049-11	FP-228 FLEXIBLE BOARD	
807	X-3952-925-1	ARM ASSY, LS		823	3-079-328-01	SCREW ,SPECIAL	
808	3-079-320-01	ROLLER, LS		824	3-079-326-02	SUPPORT, TG7	
809	3-079-316-01	ROLLER (S2), LS GUIDE		825	3-079-301-01	SPRING (GLT), TORSION	
810	3-079-319-01	GEAR, CAM		826	3-079-298-01	GEAR (T), GL	
811	X-3952-941-1	SLIDER ASSY, M		827	1-686-798-11	FP-467 FLEXIBLE BOARD	
812	3-079-321-02	SPRING (PINCH), EXTENSION		828	X-3952-927-2	COASTER (S) ASSY	
813	X-3952-940-2	PLATE ASSY, TG2 CAM		829	X-3952-930-3	ROLLER ASSY, TG5	
814	3-079-312-01	SHIELD, MOTOR		830	X-3952-929-3	COASTER (T) ASSY	
815	3-079-307-01	HOLDER, MOTOR		M902	A-7095-396-A	MOTOR BLOCK ASSY, L (LOADING)	
816	3-703-816-15	SCREW (M1.4), SPECIAL HEAD		S902	1-477-679-11	ROTARY, ENCODER (MODE SWITCH)	