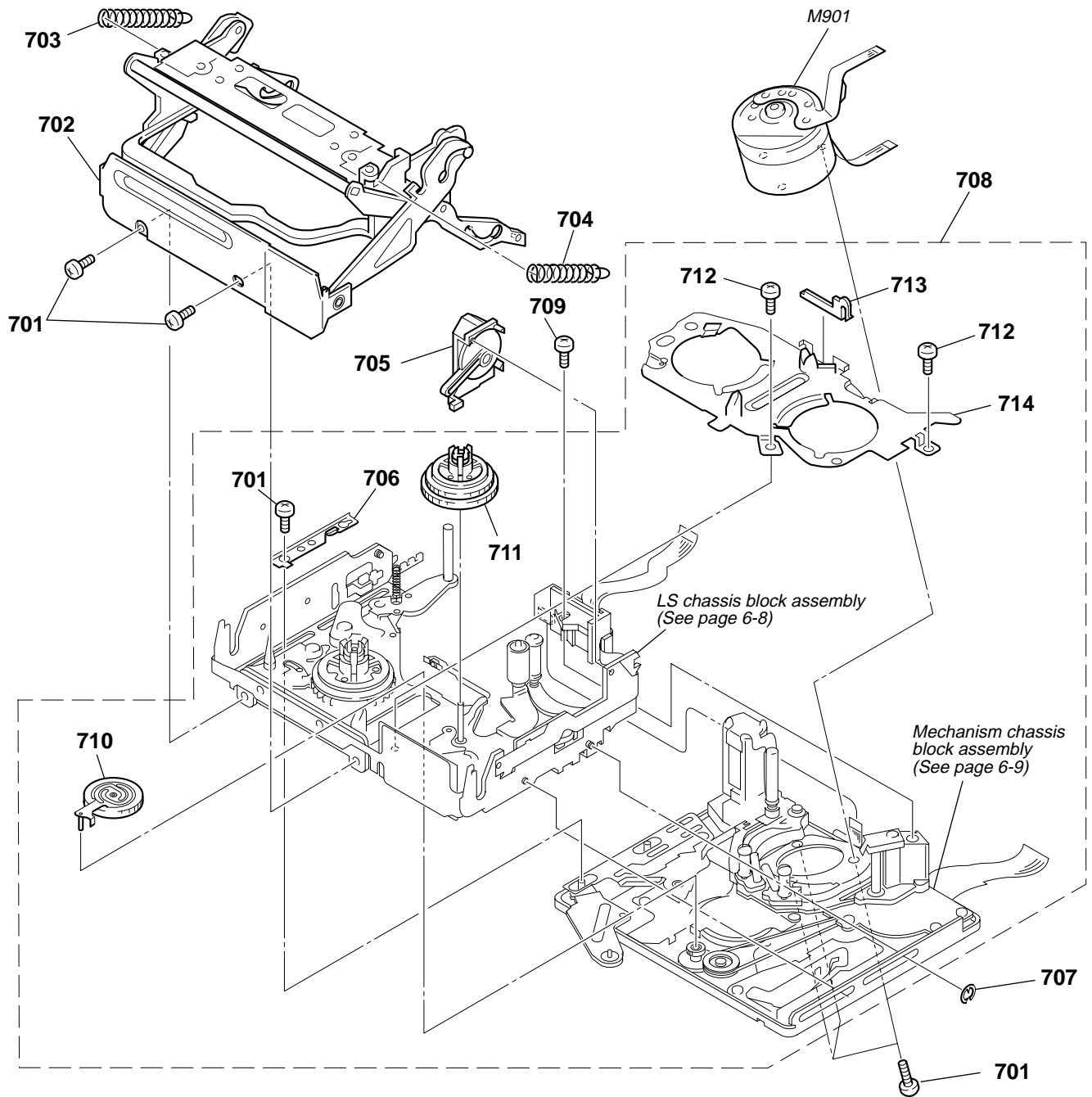


OVERALL MECHANISM DECK SECTION (J100)

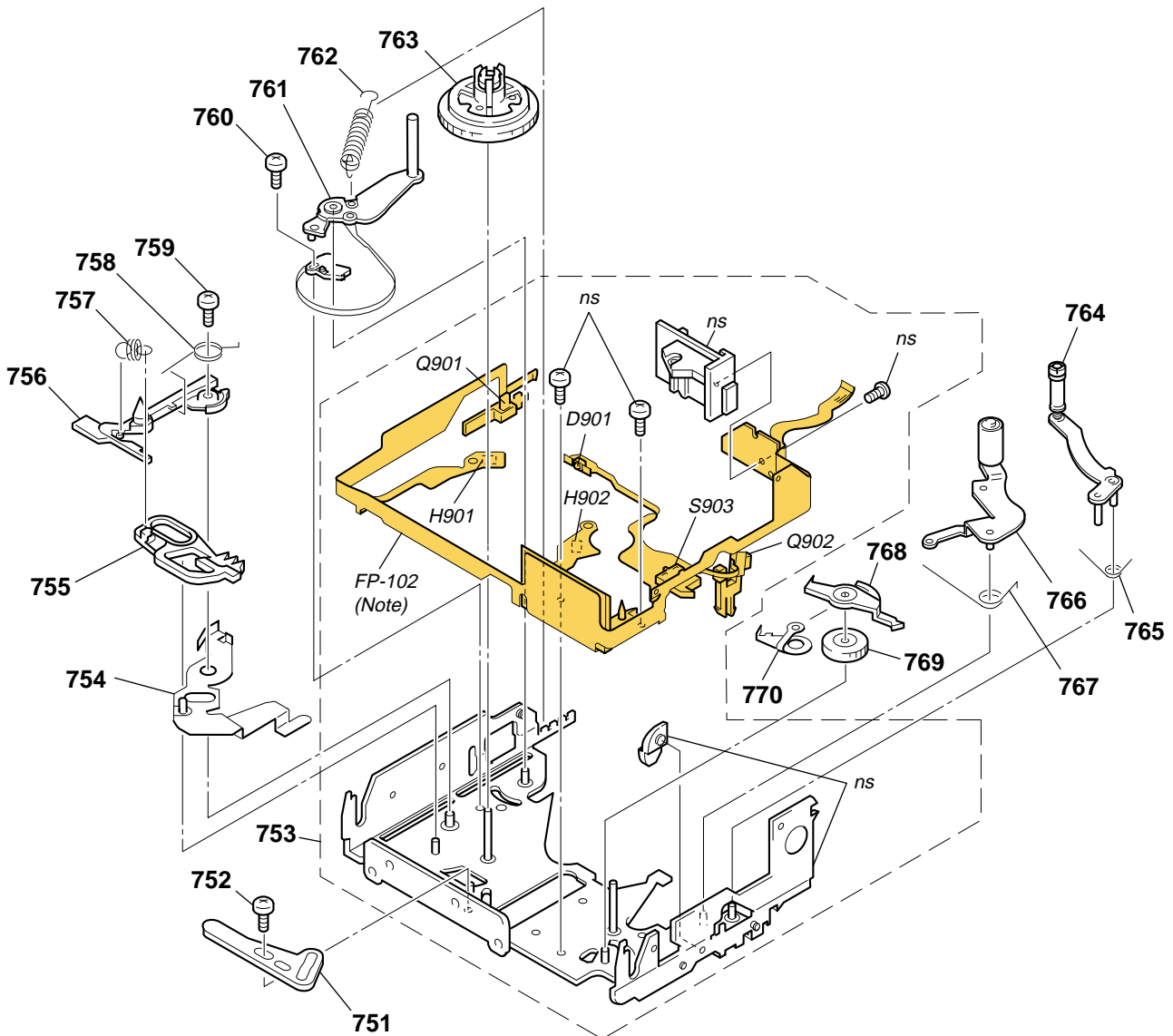


| Ref. No. | Part No. | Descriptions |
|----------|--------------|---------------------------------|
| 701 | 3-703-816-14 | SCREW (M1.4) |
| 702 | X-3952-017-3 | CASSETTE COMPARTMENT ASSY |
| 703 | 3-059-082-01 | SPRING, TENSION |
| | | (CASSETTE COMPARTMENT S) |
| 704 | 3-059-208-01 | SPRING (CASSETTE COMPARTMENT T) |
| 705 | X-3950-370-3 | DAMPER ASSY |
| 706 | 3-059-101-03 | RETAINER, LS GUIDE |
| 707 | 7-624-102-04 | STOP RING 1.5, TYPE -E |

| Ref. No. | Part No. | Description |
|----------|--------------|--------------------------------|
| 708 | A-7028-133-D | MD (J100) SUB ASSY (Y) |
| 709 | 3-703-816-41 | SCREW (M1.4X2.5), SPECIAL HEAD |
| 710 | X-3950-364-1 | GEAR ASSY, GOOSENECK |
| 711 | X-3950-366-1 | TABLE ASSY, T REEL |
| 712 | 3-075-097-01 | SCREW (M1.4X1.4), SPECIAL HEAD |
| 713 | 3-059-093-01 | RETAINER, LED |
| 714 | X-3950-361-1 | PLATE ASSY, RETAINER |
| M901 | A-7048-940-A | DRUM (DEH-18A-R) (SERVICE) |

LS CHASSIS BLOCK ASSEMBLY

ns: not supplied



Note: FP-102 is included in the LS sub assy and is attached to chassis by hot-press.

Because installation of FP-102 requires a very high accuracy, FP-102 is not supplied as an independent service parts.

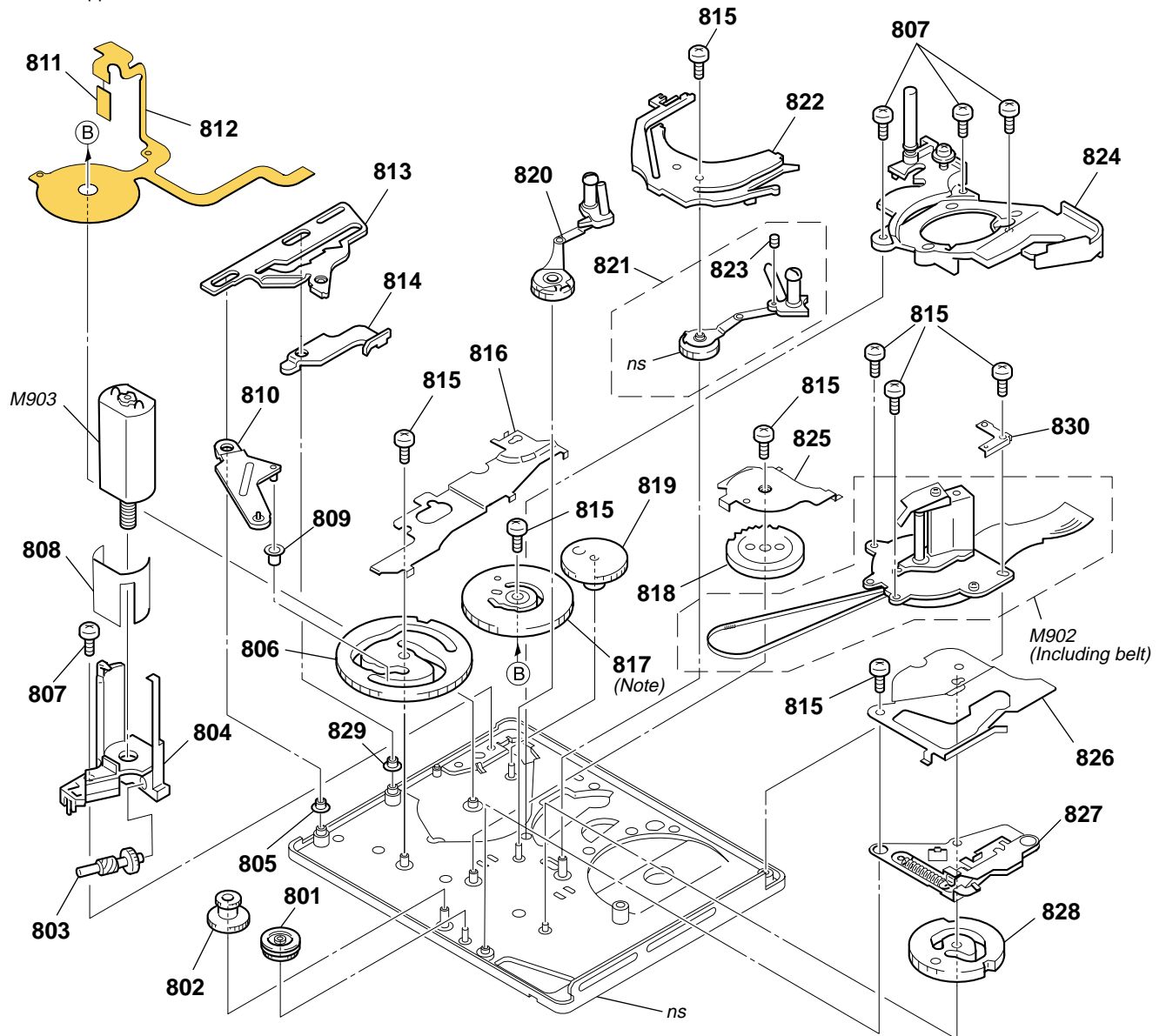
| Ref. No. | Part No. | Description |
|----------|--------------|--------------------------------|
| 751 | 3-059-173-01 | PLATE, LS CAM |
| 752 | 3-075-097-01 | SCREW (M1.4X1.4), SPECIAL HEAD |
| 753 | A-7094-816-B | LS BLOCK ASSY |
| 754 | X-3950-371-1 | ARM ASSY, BRAKE (S) DRIVING |
| 755 | 3-059-166-01 | BRAKE (S) |
| 756 | 3-059-146-01 | POSITIONING (S), CASSETTE |
| 757 | 3-059-167-01 | SPRING (BRAKE S), TENSION COIL |
| 758 | 3-059-169-01 | SPRING (BRAKE S ARM), TORSION |
| 759 | 3-703-816-14 | SCREW (M1.4) |
| 760 | 3-059-090-01 | SCREW (M1.4X2.5), SPECIAL HEAD |

| | | |
|-------|--------------|----------------------------|
| * 761 | X-3950-358-4 | TG1 ASSY |
| 762 | 3-059-156-01 | SPRING (TENSION REGULATOR) |
| 763 | X-3950-365-2 | TABLE ASSY, S REEL |

| Ref. No. | Part No. | Description |
|----------|--------------|--------------------------------------|
| 764 | A-7094-819-A | TG7 BLOCK ASSY |
| 765 | 3-059-165-01 | SPRING (TG7 RETURN), TORSION |
| 766 | X-3950-359-1 | ARM ASSY, PINCH |
| 767 | 3-059-161-01 | SPRING (PINCH RETURN), TORSION |
| 768 | 3-059-170-01 | BRAKE (T) |
| 769 | 3-059-171-01 | GEAR (T), BRAKE |
| 770 | 3-059-172-01 | SPRING (T), BRAKE |
| D901 | 8-719-078-71 | DIODE LN57A,SO (TAPE LED) |
| H901 | 8-719-067-74 | ELEMENT, HOLE HW-105A-CDE-T (S REEL) |
| H902 | 8-719-067-74 | ELEMENT, HOLE HW-105A-CDE-T (T REEL) |
| Q901 | 8-729-028-71 | TRANSISTOR, PN166,SO (TAPE END) |
| Q902 | 8-729-028-71 | TRANSISTOR, PN166,SO (TAPE TOP) |
| S903 | 1-572-288-11 | SWITCH, PUSH (C.C. DOWN) |

MECHANISM CHASSIS BLOCK ASSEMBLY

ns: not supplied



Note: Mode gear assembly is including S902 (mode switch).

| Ref. No. | Part No. | Description |
|----------|--------------|------------------------------------|
| 801 | 3-059-211-01 | GEAR, CONVERSION |
| 802 | 3-059-220-01 | GEAR, RELAY |
| 803 | 3-059-187-01 | SHAFT, WORM |
| 804 | 3-059-186-02 | HOLDER, MOTOR |
| 805 | 3-060-002-01 | ROLLER, LS GUIDE |
| 806 | 3-059-189-01 | GEAR (A), CAM |
| 807 | 3-703-816-41 | SCREW (M1.4X2.5), SPECIAL HEAD |
| 808 | 3-059-225-01 | SHIELD, MOTOR |
| 809 | 3-059-191-01 | ROLLER, LS |
| 810 | 3-059-190-01 | ARM, LS |
| 811 | 1-677-049-11 | FP-228 FLEXIBLE BOARD (DEW SENSOR) |
| 812 | 1-677-084-11 | FP-100 FLEXIBLE BOARD |
| 813 | 3-059-149-01 | SLIDER, TG1 CAM |
| 814 | 3-059-148-01 | ARM, TG1 DRIVING |
| 815 | 3-703-816-14 | SCREW (M1.4) |
| 816 | 3-059-117-01 | COVER (A), GEAR |
| 817 | X-3950-367-1 | GEAR ASSY, MODE (Note) |

| Ref. No. | Part No. | Description |
|----------|--------------|---|
| 818 | 3-059-139-01 | GEAR, GL DRIVING |
| 819 | 3-059-188-01 | GEAR, DECELERATION |
| 820 | A-7094-818-A | COASTER (S) BLOCK ASSY |
| 821 | A-7094-817-A | COASTER (T) BLOCK ASSY |
| 822 | 3-059-126-01 | RAIL, GUIDE |
| 823 | 3-962-914-01 | SCREW (M1.4X2) |
| 824 | A-7094-822-A | DRUM BASE BLOCK ASSY |
| 825 | 3-059-118-01 | COVER (B), GEAR |
| 826 | 3-059-083-01 | COVER (C), GEAR |
| 827 | X-3950-368-1 | ARM ASSY, PINCH DRIVING |
| 828 | 3-059-192-01 | GEAR (B), CAM |
| 829 | 3-063-355-01 | ROLLER (S1), LS GUIDE |
| 830 | 3-065-202-01 | SUPPORT, TG7 |
| M902 | 8-835-685-01 | MOTOR, DC SCD18A/C-NP (INCLUDING BELT) (CAPSTAN) |
| M903 | A-7094-823-A | MOTOR BLOCK ASSY, L |