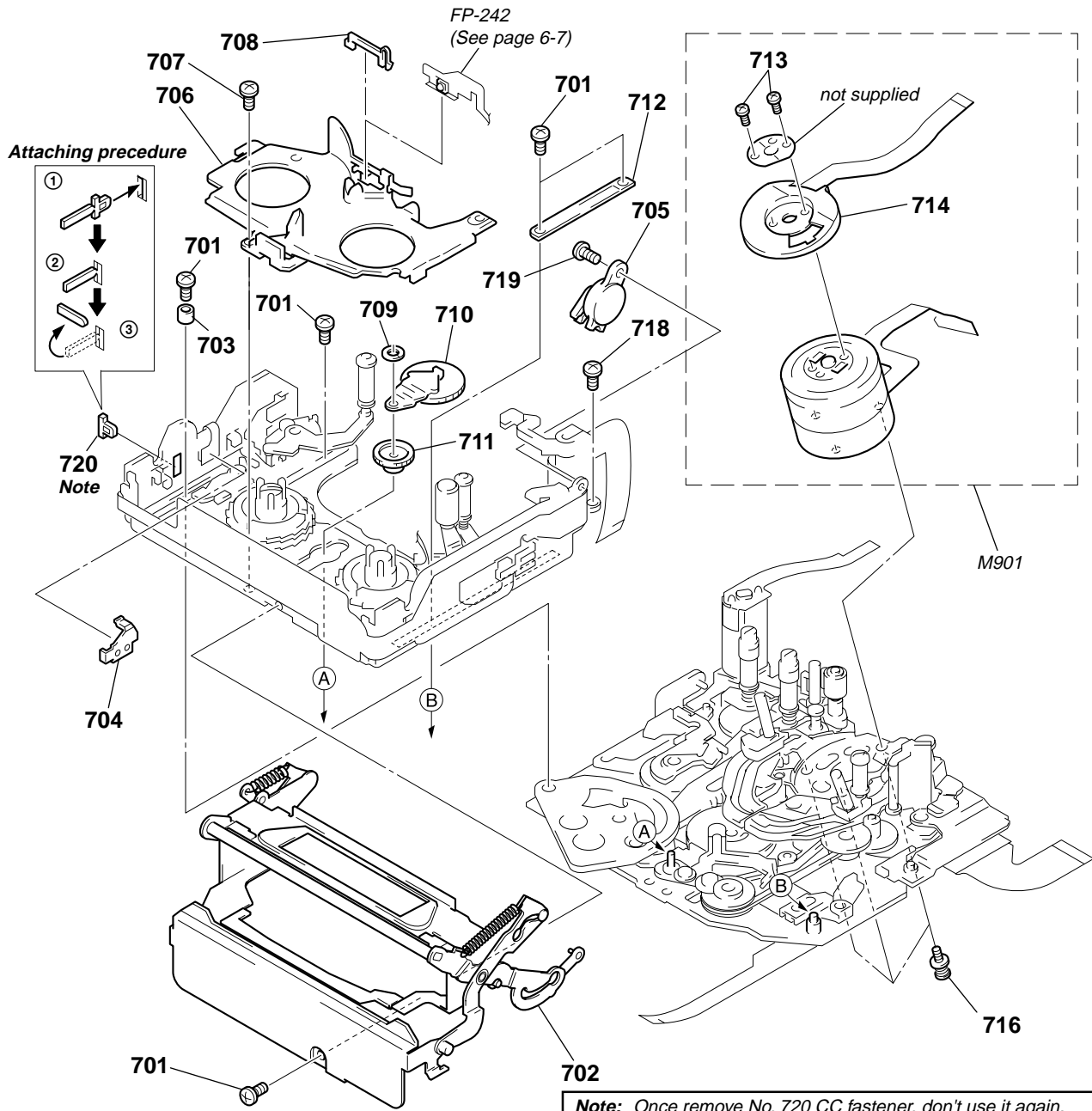


# CASSETTE COMPARTMENT AND DRUM ASSEMBLY



**Note:** Once remove No. 720 CC fastener, don't use it again.  
Be sure to replace it with new one.  
(Attaching procedure is as shown above figure.)

Ref. No.	Part No.	Description	Remarks	Ref. No.	Part No.	Description	Remarks
701	3-728-103-11	SCREW (M1.4X1.6)		711	3-748-736-01	GEAR, RELAY	
702	X-3947-480-1	CASSETTE COMPARTMENT ASSY		712	3-748-702-02	SLIDER, CAM	
703	3-748-703-01	COLLAR		713	3-962-914-01	SCREW (M1.4X2)	
* 704	3-976-449-02	COVER, CC SWITCH		714	X-3944-897-2	MOTOR FPC ASSY	
705	3-976-446-01	DAMPER		716	A-7026-009-B	SCREW ASSY, DRUM FITTING	
706	X-3748-613-3	BASE ASSY, LED		718	3-703-816-42	SCREW (M1.4X2.5), SPECIAL HEAD	
707	3-704-197-21	SCREW (M1.4X2.5), LOCKING		719	3-962-346-01	SCREW (M1.6)	
708	3-748-683-01	HOLDER, LED		* 720	3-979-009-03	FASTENER, CC	
709	3-315-414-31	WASHER		M901	A-7048-887-A	DRUM ASSY (DEH-11B-R)	
710	X-3748-609-2	GOOSENECK ASSY					

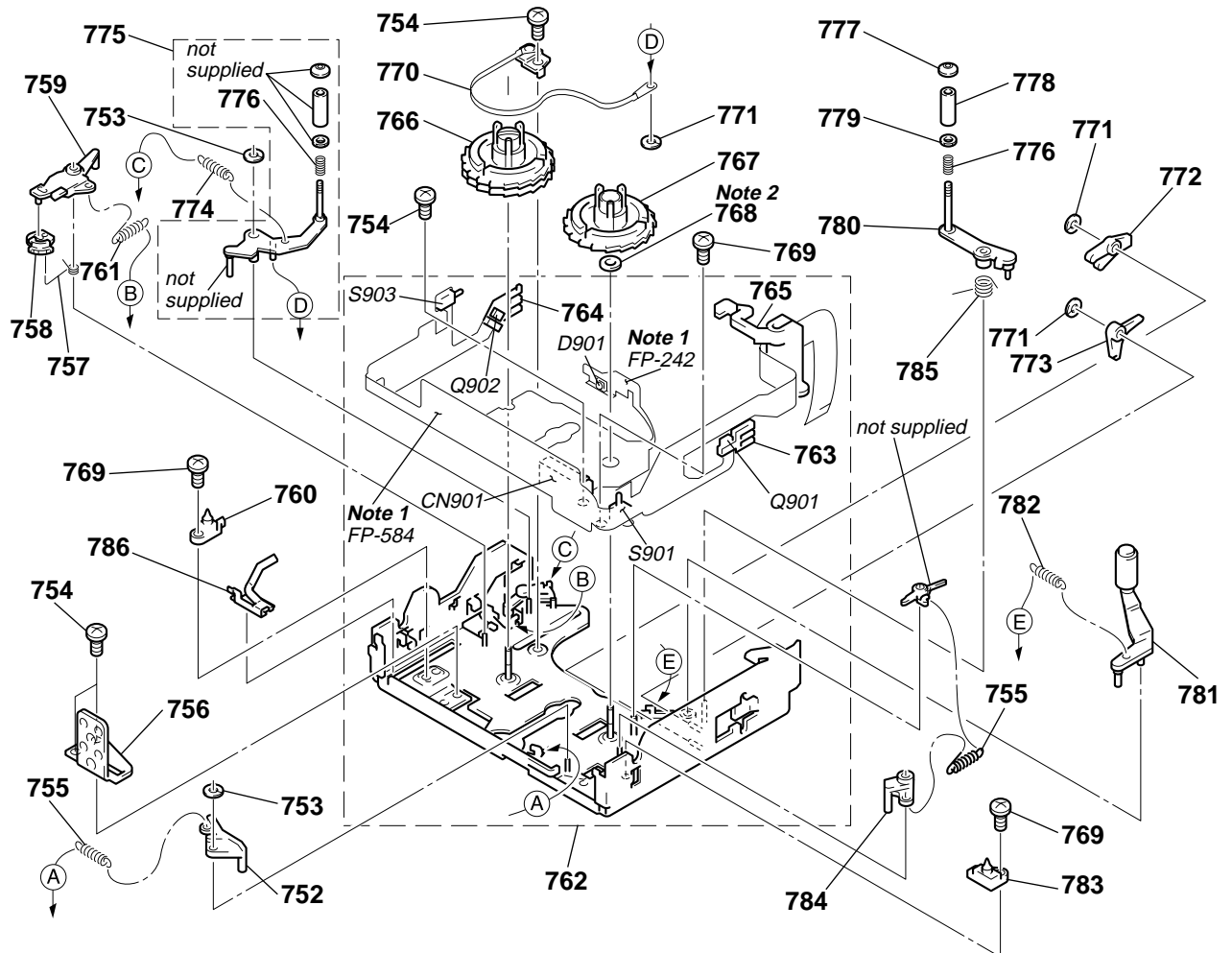
## LS CHASSIS BLOCK SECTION

### Note 1: About FP-242 and FP-584

The FP-242 and FP-584 flexible boards are installed to a chassis with a hot press, which are included in the Ref. No. 762 chassis (D2) assy, LS block section, They are not supplied separately because the high precision for installation is needed.

### Note 2: Selecting the T washer

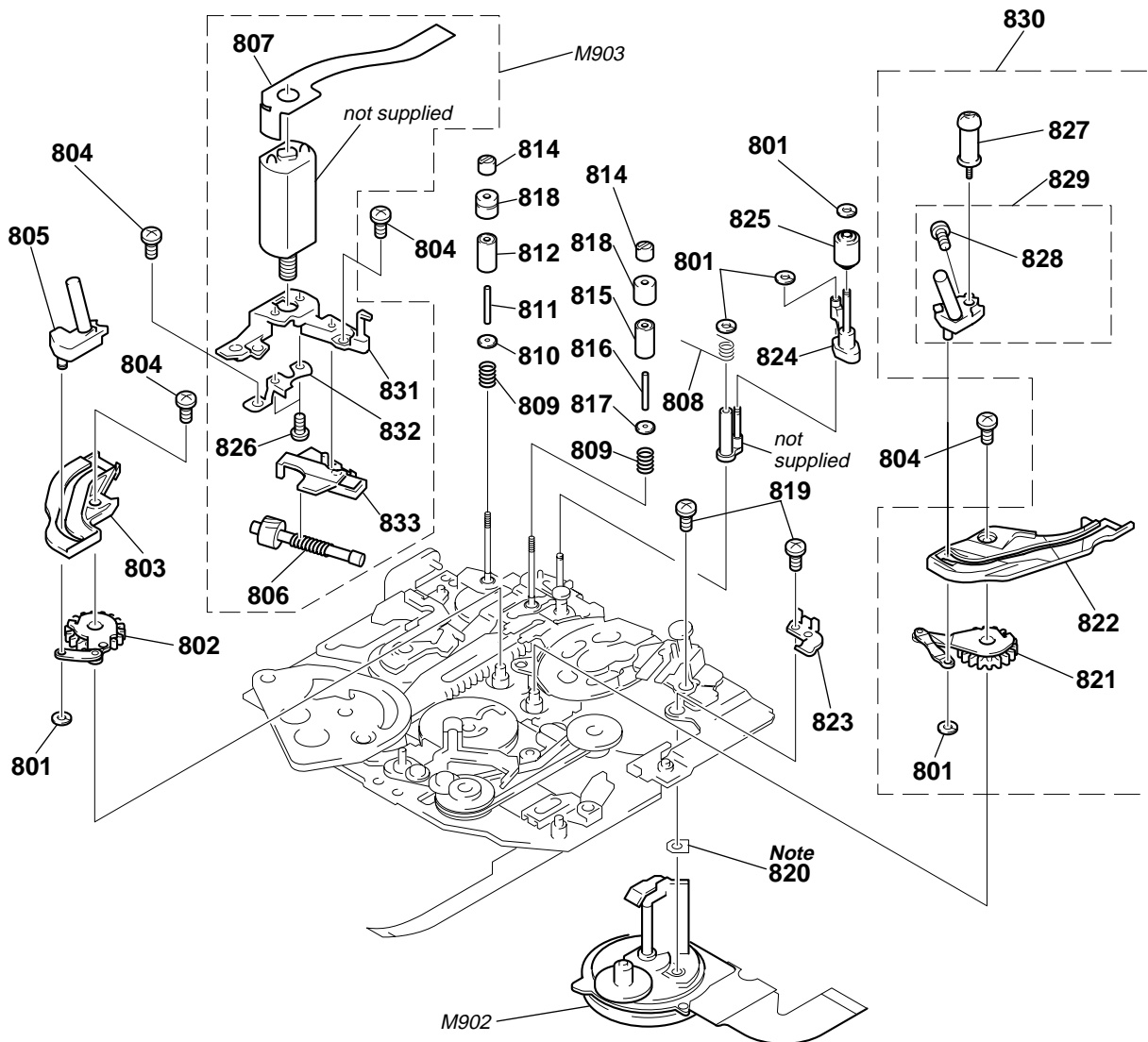
Select proper parts for the Ref. No. 768 T washer according to "Height adjustment for T reel table assembly" on page 23 in the "DV MECHANICAL ADJUSTMENT MANUAL I" (9-973-815-11).



Ref. No.	Part No.	Description	Remarks	Ref. No.	Part No.	Description	Remarks
752	3-748-775-03	BRAKE, RVS		772	3-748-680-01	FOLLOWER, SLIDER	
753	3-315-414-31	WASHER		773	3-748-679-01	LEVER, LOCK	
754	3-972-669-01	SCREW (M1.4X1.6)		774	3-748-822-02	SPRING, EXTENSION	
755	3-748-776-01	SPRING, TENSION		775	A-7026-020-B	ARM BLOCK ASSY,	
756	3-748-681-01	PLATE, LS CAM		776	3-940-891-01	SPRING, COMPRESSION	
757	3-748-774-01	SPRING, TORSION		777	3-966-194-01	FLANGE, TG7 UPPER	
758	3-748-773-04	HARD, S		778	3-748-777-02	TG7	
759	3-748-815-02	ARM, S BRAKE		779	3-964-614-01	FLANGE, TG7 LOWER	
760	3-748-677-01	POSITIONING, S		780	X-3748-616-2	ARM ASSY, TG7	
761	3-968-656-01	SPRING, TENSION		781	X-3748-630-2	ARM ASSY, PINCH	
762	A-7026-025-A	CHASSIS (D2) ASSY, LS		782	3-748-603-01	SPRING, TENSION	
763	3-976-158-01	SENSOR, HOLDER, T		783	3-748-678-01	POSITIONING, T	
764	3-976-644-01	SENSOR, HOLDER, S		784	3-748-778-02	BRAKE, T HARD	
765	3-976-824-01	HOLDER, FPC		785	3-748-675-01	SPRING, TORSION	
766	X-3748-614-2	TABLE ASSY, REEL, S		786	3-973-067-01	SPRING, CASSETTE COMPARTMENT UP	
767	X-3748-615-2	TABLE ASSY, REEL, T		CN901	1-770-312-11	CONNECTOR 4P	
768	3-748-682-01	WASHER, T (t:0.25, GREEN)		D901	8-719-050-98	DIODE LN57.S0	
768	3-748-682-11	WASHER, T (t:0.1, YELLOW)		Q901	8-729-028-71	TRASISTER PN166.S0	
768	3-748-682-21	WASHER, T (t:0.35, BLACK)		Q902	8-729-028-71	TRASISTER PN166.S0	
769	3-703-816-42	SCREW (M1.4X2.5), SPECIAL HEAD		S901	1-762-351-11	SWITCH, PUSH (1 KEY) (REC PROOF)	
770	X-3748-618-2	BAND ASSY, TENSION REGULATOR		S903	1-572-467-21	SWITCH, PUSH (1 KEY) (CC DOWN)	
771	3-315-384-11	WASHER, STOPPER					

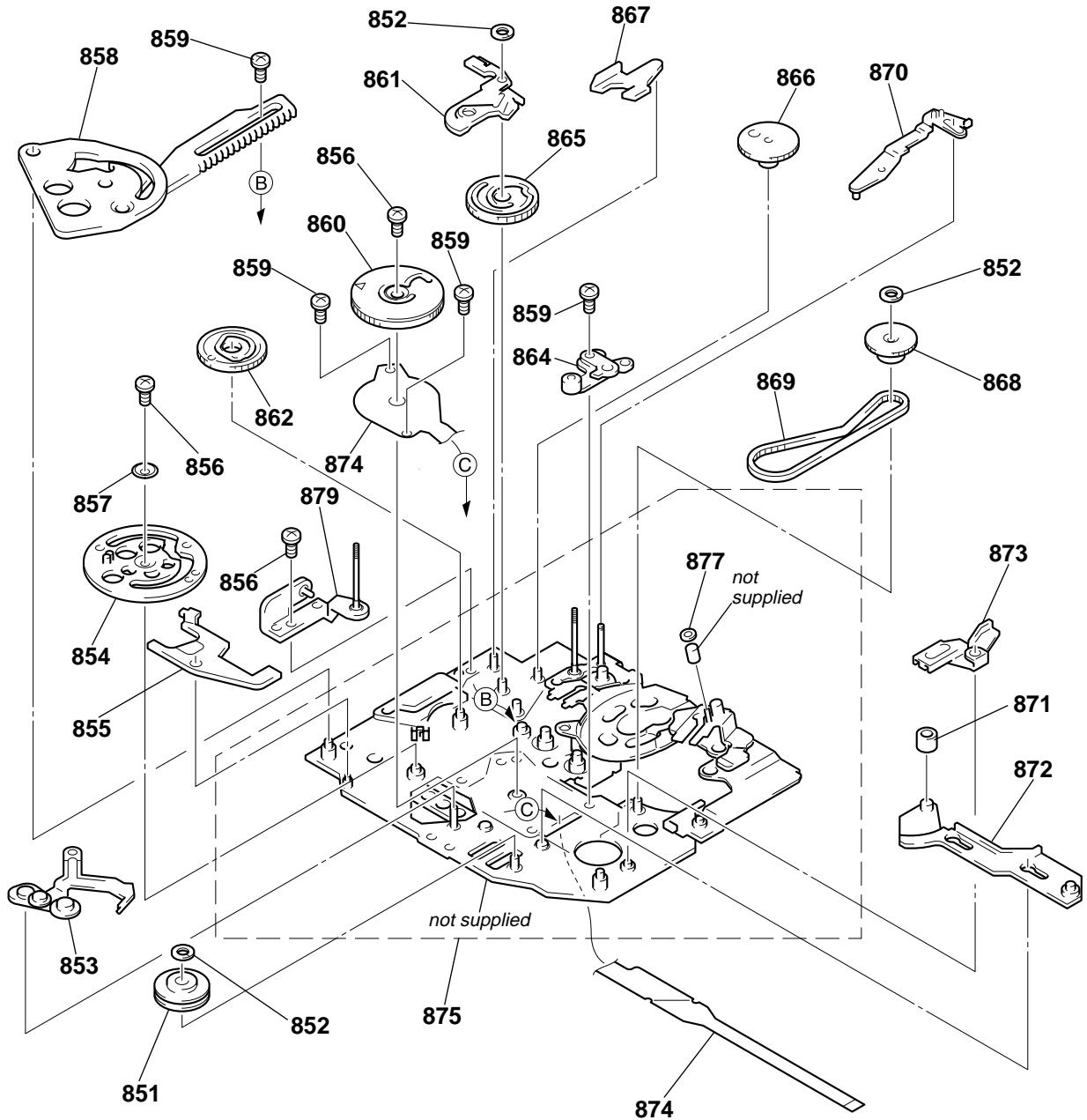
## MECHANISM CHASSIS BLOCK SECTION-1

**Note:** Be sure to remember the installed position (one of two position), direction and thickness of the Ref. No. 820 (head spacer) when the M902 (capstan motor) is removed. Refer to "3-9. Capstan motor" on page 15 in the "DV MECHANICAL ADJUSTMENT MANUAL I" (9-973-815-11) for details. The thickness of head spacer is normally 100 µm. If it is lost, two 50 µm head spacers will be needed. Be careful not to loose it.



Ref. No.	Part No.	Description	Remarks	Ref. No.	Part No.	Description	Remarks
801	3-315-414-31	WASHER		819	3-972-669-01	SCREW (M1.4X1.6)	
802	X-3748-623-1	GL (S) ASSY		820	3-727-843-16	HEAD SPACER(FOR CORRECTION)(t:50um)note	
803	3-748-600-02	RAIL (S)		821	X-3748-624-1	GL (T) ASSY	
804	3-703-816-71	SCREW (M1.4X3.0), SPECIAL HEAD		822	3-748-601-02	RAIL (T)	
805	X-3748-622-2	COASTER (S) ASSY		823	3-964-430-01	SPRING, LS RETAINER	
806	X-3748-633-1	SHAFT ASSY, WORM		824	X-3748-628-2	SLIDE ASSY, HC	
807	1-666-102-11	FP-586 FLEXIBLE		825	A-7026-006-A	ROLLER ASSY, HC	
808	3-748-742-02	SPRING, TORSION		826	3-947-504-01	SCREW (M1.2X2), SPECIAL, 0	
809	3-966-107-01	SPRING, COMPRESSION		827	X-3748-626-3	TG5 ASSY	
810	3-966-105-01	FLANGE, TG1 LOWER		828	3-965-211-01	SCREW (M1)	
811	3-050-519-01	SLEEVE, TG13		829	X-3948-052-1	COASTER (T) ASSY	
812	3-966-099-01	ROLLER, TG13		830	A-7026-002-A	GL (T) BLOCK ASSY	
814	3-966-101-01	NUT, TG13		* 831	3-976-463-01	HOLDER (DIA. 8), MOTOR	
815	3-966-099-11	ROLLER, TG13		* 832	3-964-429-01	COVER, WHEEL	
816	3-050-519-11	SLEEVE, TG13		* 833	3-976-464-01	HOLDER (DIA. 8), SHAFT	
817	3-966-106-01	FLANGE, TG3 LOWER		M902	8-835-524-04	MOTOR, DC SCD-0101A (CAPSTAN)	
818	3-973-948-01	FLANGE (2), TG13 UPPER		M903	A-7010-673-A	ASSY, LM MOTOR (LOADING)	

## MECHANISM CHASSIS BLOCK SECTION-2



Ref. No.	Part No.	Description	Remarks	Ref. No.	Part No.	Description	Remarks
851	X-3945-640-1	PULLEY ASSY, RELAY		865	3-748-738-02	GEAR, NO.2	
852	3-315-414-31	WASHER		866	3-748-741-03	GEAR, NO.1	
853	X-3748-600-1	ARM ASSY, COMPULSION		867	3-748-731-02	ARM, POSITION	
854	X-3748-605-1	CAM (S) ASSY		868	X-3945-639-1	PULLEY ASSY, CONVERSION	
855	3-976-452-01	LEVER, EJECT		869	3-748-734-01	BELT, RELAY	
856	3-703-816-42	SCREW (M1.4X2.5), SPECIAL HEAD		870	3-974-501-01	ARM (2), RVS STOPPER	
857	3-976-460-01	SPACER, CAM (S)		871	3-728-109-01	ROLLER, LS	
858	X-3748-602-2	ARM ASSY, LS		872	3-748-647-01	SLIDER, MODE	
859	3-728-103-11	SCREW (M1.4X1.6)		873	3-748-733-01	ARM, PINCH RELEASE	
860	X-3748-604-1	CAM ASSY, MODE		874	1-666-101-11	FP-585 FLEXIBLE BOARD	
861	3-748-739-02	RETAINER, GEAR		875	A-7026-023-B	CHASSIS SUB BLOCK ASSY	
862	3-748-740-03	GEAR, NO.3		877	4-943-288-01	WASHER	
864	X-3748-627-1	ARM ASSY, ADJUSTMENT		879	X-3748-606-4	BASE ASSY, TG1	